



## EN ■ Pedestal Fan

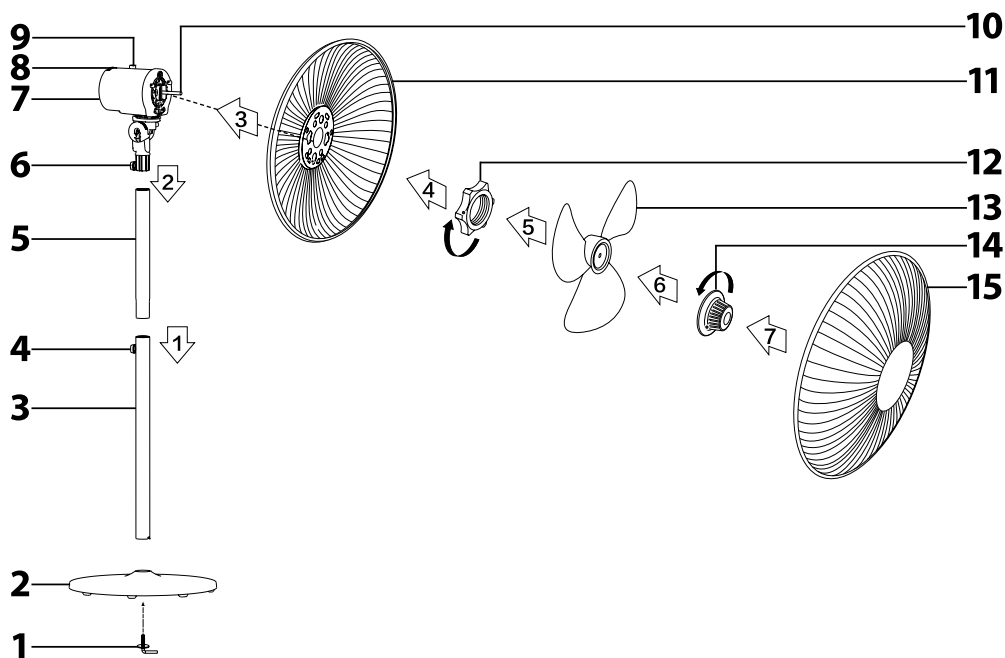
*Translation of the original manual*

### **READ CAREFULLY AND STORE FOR FUTURE USE.**

- This appliance may be used by children 8 years of age and older and by persons with physical or mental impairments or by inexperienced persons, if they are properly supervised or have been informed about how to use the product in a safe manner and understand the potential dangers. Cleaning and user maintenance must not be performed by children unless they are older than 8 years of age and under supervision. Keep this appliance and the power cord out of reach of children that are younger than 8 years of age. Children must not play with the appliance.
- Before connecting the appliance to a power socket, check that the rated voltage on its rating label matches the electrical voltage in the power socket.
- Connect the appliance only to a properly grounded socket.
- The appliance is designed for use at home, in offices and similar types of areas. Do not use it in very dusty or humid rooms such as laundries or bathrooms, in areas where chemical or explosive substances are stored, in industrial surroundings or outdoors.
- Do not place the appliance in the vicinity of an open flame or appliances that are sources of heat.
- Do not place the appliance on unstable surfaces such as carpets with very long and thick fibres. The appliance may only be used on a dry, stable, smooth and horizontal surface.
- Only use original parts to assemble the appliance. Before starting to assemble the appliance, make sure that it is turned off and disconnected from the power socket.
- Prior to connecting the appliance to a power socket, make sure that the appliance is correctly assembled according to the instructions in this user's manual. Do not start the appliance without the protective grills properly installed.
- Do not touch the appliance with wet or damp hands. This applies especially when it is connected to a power socket.
- Do not cover the appliance with any items while it is running. Never insert fingers or other items through the protective grille.

- Avoid coming into contact with the rotating parts of the appliance.
- Never submerge the appliance or its power cord in water or any other liquid and do not wash it under running water.
- Make sure the power cord does not hang over the edge of a table or that it is not touching a hot surface.
- Always turn off the appliance and disconnect it from the power socket when leaving it without supervision, when not using it and before moving, disassembling or cleaning it.
- Never attempt to remove the protective cover of the motor unit.
- Disconnect the appliance from the power socket by pulling on the plug, never pulling on the power cord. Otherwise, this could damage the power cord or the socket.
- If the power cord is damaged, it must be replaced by an authorised service centre or by another similarly qualified person, this will prevent the creation of a dangerous situation. It is forbidden to use the appliance if it has a damaged power cord.
- Do not use the appliance if it is not working correctly, if it has been damaged or has been submerged in water. To avoid a hazardous situation arising, do not repair the device yourself or modify it in any way. Have all repairs performed at an authorised service centre. By tampering with the appliance, you risk voiding your legal rights arising from unsatisfactory performance or quality warranty.

A



# EN Pedestal fan

## User's manual

- Prior to using this appliance, please read the user's manual thoroughly, even in cases, when one has already familiarised themselves with previous use of similar types of appliances. Only use the appliance in the manner described in this user's manual. Keep this user's manual in a safe place where it can be easily retrieved for future use.
- We recommend saving the original cardboard box, packaging material, purchase receipt and responsibility statement of the vendor or warranty card for at least the duration of the legal liability for unsatisfactory performance or quality. In the event of transportation, we recommend that you pack the appliance in the original box from the manufacturer.

### DESCRIPTION OF THE FAN

- A1** Locking screw of base stand
- A2** Base stand
- A3** Bottom connecting pole
- A4** Bottom pole fastening screw
- A5** Top connecting pole
- A6** Top pole fastening screw
- A7** Fan head
- A8** Fan power and speed setting knob
  - 0 – off, 1 – low speed, 2 – medium speed, 3 – high speed
- A9** Oscillation toggle switch
- A10** Shaft
- A11** Rear protective cover
- A12** Cover nut
- A13** Fan blades
- A14** Fan blade cover
- A15** Front protective cover



#### Note:

The fan is supplied disassembled. Its parts have been designed to fit together properly and to enable you to easily disassemble, clean and store it as required.

### BEFORE ASSEMBLING

- Take the appliance and its accessories out of the packaging materials. Before disposing of the packaging materials, make sure that no part of the appliance is missing.

### ASSEMBLING THE APPLIANCE

- After assembly, proceed according to the numbered arrows in figure A.
- Place the base stand **A2** on an even surface. Into the hole in the middle of the base stand **A2**, insert the bottom connecting pole **A3** and secure it in place using screw **A1**. Insert the top connecting pole **A5** into the fan head **A7** and secure the top pole **A6** using the fastening screw. Now insert the free end of the top connecting pole **A5** into the bottom connecting pole **A3** and secure in place using the fastening screw of the bottom pole **A4**.
- Put the rear protective cover **A11** on to the fan head **A7** so that the cut-out in the rear protective cover **A11** slides on to the tab in the fan head **A7**.
- Secure the rear protective cover **A11** in place using the cover nut **A12**.
- On to the shaft **A10** place the fan blade **A13**. Spin the fan blade **A13**, to check that it spins freely without any problems. Secure the fan blade **A13** in place using fan blade cover **A14**.
- Finally put on the front protective cover **A15**. On the outer perimeter for the front cover **A15** there are clamps, hooks and a screw hole. Align the front protective cover so that the clamps and hooks are in alignment and that the screw holes are in alignment also. Then gently press the edges of the covers together until you hear a click. Put screws into the holes and secure in place.

### USING THE FAN

- Place the fan on a horizontal, stable, dry and smooth surface within reach of a power socket. Connect the power cord to a power socket. Before connecting to a power socket, ensure that the fan is correctly assembled.

### SETTING THE SPEED AND TURNING OFF THE FAN

- To set the air flow speed, use knob **A8**. The individual positions of knob **A8** are described below:
  - 0 – turn off the fan;
  - I – low air flow speed setting;
  - II – medium air flow speed setting;
  - III – high air flow speed setting.
- When you have finished using the fan, always turn it off by setting knob **A8** to position 0 (off) and disconnect it from the power socket.

### SETTING HORIZONTAL OSCILLATION

- The horizontal oscillation of the fan head **A7** can be set using the toggle switch **A9**. When the fan is running, push down the toggle switch **A9** to start horizontal oscillation. The fan head **A7** will oscillate from side to side at an angle of approximately 80°. To turn off the oscillation, pull up the toggle switch **A9**.

### SETTING THE TILT ANGLE OF THE FAN HEAD

- Make sure that the fan is turned off before setting the tilt angle of the fan head **A7**. Carefully use both hands to set the tilt angle.



#### Note:

The fan head **A7** may only be tilted up and down in a limited range. Do not set the tilt angle by force.

### SETTING THE HEIGHT OF THE FAN HEAD

- To set the height of the fan head **A7**, carefully loosen the fastening screw of the bottom pole **A4** and slide the top pole **A5** into the bottom pole **A3**, to adjust the height of the fan head **A7**. Tighten the fastening screw of the bottom pole **A4**.

### CLEANING AND MAINTENANCE

- Before cleaning it, make sure that the fan is turned off and disconnected from the power socket.
- Keep the fan clean. Before cleaning, turn the fan off and disconnect the power cord from the power socket. Do not disassemble the fan.
- To clean the outer surface of the fan, use a clean, lightly dampened cloth. Then wipe everything so that it is thoroughly dry. Make sure that when cleaning, no water leaks into the motor unit.
- Do not submerge the fan or its power cord in water and do not wash it under running water.
- For cleaning do not use steel wool, cleaning products with an abrasive effect, petrol and other solvents.
- The fan blades may also be cleaned using a vacuum cleaner with a brush nozzle fitted.

### STORAGE

- When not using the fan for an extended period of time, store it in a clean, dry location that is out of reach of children.

### TECHNICAL SPECIFICATIONS

Rated voltage range.....	220–240 V ~
Rated frequency.....	50 Hz
Rated power input.....	50 W
Noise level.....	56 dB(A)
Fan blade diameter.....	40 cm
Maximum air flow of the fan.....	51 m <sup>3</sup> /min
Operation value.....	1.31 (m <sup>3</sup> /min)/W
Maximum air flow speed.....	2.75 m/s
Standard for measuring the operating value.....	IEC 60879:1986+cor1:1992,
Contact for further information.....	FAST ČR, a.s., Černokostelecká 1621, 251 01 Říčany, Czechia

The declared noise emission level for fan model SFN 4060WH is 56 dB(A), which represents a level A of acoustic power with respect to a reference acoustic power of 1 pW.



#### Safety class for electrical shock protection:

Class II – Electrical shock protection is provided by double or heavy-duty insulation.

We reserve the right to change text and technical specifications.

## INSTRUCTIONS AND INFORMATION REGARDING THE DISPOSAL OF USED PACKAGING MATERIALS

Dispose of used packaging material at a site designated for waste in your municipality.

### DISPOSAL OF USED ELECTRICAL AND ELECTRONIC EQUIPMENT



This symbol on products or original documents means that used electric or electronic products must not be added to ordinary municipal waste. For proper disposal, renewal and recycling hand over these appliances to determined collection points. Alternatively, in some European Union states or other European countries you may return your appliances to the local retailer when buying an equivalent new appliance.

Correct disposal of this product helps save valuable natural resources and prevents potential negative effects on the environment and human health, which could result from improper waste disposal. Ask your local authorities or collection facility for more details.

In accordance with national regulations penalties may be imposed for the incorrect disposal of this type of waste.

#### **For business entities in European Union states**

If you want to dispose of electric or electronic appliances, ask your retailer or supplier for the necessary information.

#### **Disposal in other countries outside the European Union**

This symbol is valid in the European Union. If you wish to dispose of this product, request the necessary information about the correct disposal method from the local council or from your retailer.



This product meets all the basic requirements of EU directives related to it.